

## Senstick Temperature Probe STP40

Senstick is an award-winning LoRaWAN sensor. It is designed to operate autonomously for up to 7 years in harsh environments. It is suitable for wide variety of applications where reliable and case specific solution is needed. STP40 is a cost-effective temperature probe sensor.

### Key features

- Harsh environments
- Rigidized housing
- Easy installation
- Motion detection
- NFC configuration

### Applications

- Mulch temperature
- Soil temperature
- Rail tracks temperature
- Water temperature



## Technical specification

Enclosure	
Weight	170g w/ batteries / 230 g with batteries
Dimensions	Casing: 105mm x 25mm / Probe: 5mm x 50 mm
Cable length	2m or custom
Materials	UV stable plastic
IP rating	IP68
Operating conditions	
Temperature	-40°C to +85°C
Humidity	0 to 100% RH
Power supply	
Battery type	1x 3,6V Lithium
Expected operation	<7 years (depending on sampling, signal, environment)
Configuration	
Sending interval	Configuration via NFC and downlink
Data upload interval	Configuration via NFC and downlink
NFC configuration	<a href="#">Native Android App</a>

# Datasheet

Release: 3.8.2023  
Version: 1.0

senzemo

## Connectivity

Wireless Technology	LoRaWAN® 1.0.3
Wireless Security	LoRaWAN® End-to-End encryption (AES-CTR), Data Integrity Protection (AES-CMAC)
LoRaWAN Device Type	Class A - End-device
Supported regions	US902–928, EU863–870, AS920-923, AU915–928
Link Budget	137dB (SF7) to 151dB (SF12)
RF Transmit Power	14dBm (Region specific)

## Sensors

### Temperature Probe

Range	-55°C to +125°C (Possible higher with custom probes - contact sales)
Accuracy	±0.5°C

### Acceleration

Range	±2g to ±16g
-------	-------------

## Accessories

MPOM40	Snap-on mounting kit, suitable for indoor use
--------	---

## Senstick Microclimate SMC30

Senstick is an award-winning LoRaWAN sensor. It is designed to operate autonomously for up to 7 years in harsh environments. It is suitable for wide variety of applications where reliable and case specific solution is needed. It combines measurements of temperature, humidity and air pressure.

### Key features

- Harsh environments
- Rigidized housing
- Easy installation
- Motion detection
- NFC configuration

### Applications

- Frost protection
- Thermal comfort in cities
- Machine failure in production
- Harvested yield



### Technical specification

Enclosure	
Weight	120g w/ batteries / 170 g with batteries
Dimensions	18mm x 210mm
Materials	UV stable plastic, ALU casing, stainless steel mesh
IP rating	IP65
Operating conditions	
Temperature	-40°C to +85°C
Humidity	0 to 100% RH
Power supply	
Battery type	2 x 1.5V AAA Alkaline
Expected operation	<7 years (depending on sampling, signal, environment)
Configuration	
Sending interval	Configuration via NFC and downlink
Data upload interval	Configuration via NFC and downlink
NFC configuration	<a href="#">Native Android App</a>

## Connectivity

Wireless Technology	LoRaWAN® 1.0.3
Wireless Security	LoRaWAN® End-to-End encryption (AES-CTR), Data Integrity Protection (AES-CMAC)
LoRaWAN Device Type	Class A - End-device
Supported regions	US902-928, EU863-870, AS920-923, AU915-928
Link Budget	137dB (SF7) to 151dB (SF12)
RF Transmit Power	14dBm (Region specific)

## Sensors

### Temperature

Range	-40°C to +85°C
Accuracy	±0.2°C

### Relative humidity

Range	0% to 100%
Accuracy	±1.8%

### Acceleration

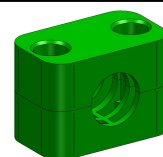
Range	±2g to ±16g
Accuracy	±40mg

### Air Pressure

Range	300 to 1200hPa
Accuracy (absolute)	±1hPa

## Accessories

SWP10	Solar shield with mounting for poles
MPOM10	Snap-on mounting kit, suitable for indoor use
MABS10	ABS mounting kit. Installation with two screws for indoor and outdoor use
MALU10	Rigidized ALU mounting kit. Installation with two screws for indoor and outdoor use.



## Senstick Temperature Only STO10

Senstick is an award-winning LoRaWAN sensor. It is designed to operate autonomously for up to 7 years in harsh environments. It is suitable for wide variety of applications where reliable and case specific solution is needed.



### Key features

- Harsh environments
- Rigidized housing
- Easy installation
- Motion detection
- NFC configuration

### Applications

- Cold Rooms
- HACCP digitalization
- Warehouses
- Storages
- Office spaces

## Technical specification



### Enclosure

Weight	90g w/ batteries / 140 g with batteries
Dimensions	105mm x 25mm
Materials	UV stable plastic
IP rating	IP67

### Operating conditions

Temperature	-40°C to +85°C
Humidity	0 to 100% RH

### Power supply

Battery type	1 x 1.5V AA Alkaline
Expected operation	<7 years (depending on sampling, signal, environment)

### Configuration

Sending interval	Configuration via NFC and downlink
Data upload interval	Configuration via NFC and downlink
NFC configuration	<a href="#">Native Android App</a>

# Datasheet

Release: 15.4.2024  
Version: 1.0

senzemo

## Connectivity

Wireless Technology	LoRaWAN® 1.0.3
Wireless Security	LoRaWAN® End-to-End encryption (AES-CTR), Data Integrity Protection (AES-CMAC)
LoRaWAN Device Type	Class A - End-device
Supported regions	US902–928, EU863–870, AS920-923, AU915–928 (All bands available)
Link Budget	137dB (SF7) to 151dB (SF12)
RF Transmit Power	14dBm (Region specific)

## Sensors

**SENSIRION**

### Temperature

Range	-40°C to +85°C
Accuracy	±0.2°C

### Acceleration

Range	±2g to ±16g
Accuracy	±40mg

## Senstick Probe Temperature Food STF40

Senstick is an award-winning LoRaWAN sensor. It is designed to operate autonomously for up to 7 years in harsh environments. It is suitable for wide variety of applications where reliable and case specific solution is needed. STF40 is a cost-effective food temperature sensor..

### Key features

- Harsh environments
- Rigidized housing
- Easy installation
- Motion detection
- NFC configuration

### Applications

- Food temperature
- Food storage temperature
- Cooking temperature



### Technical specification

Enclosure	
Weight	170g w/ batteries / 230 g with batteries
Dimensions	Casing: 105mm x 25mm / Probe: 4mm x 170 mm
Cable length	1.5 m or custom
Materials	UV stable plastic
IP rating	IP68
Operating conditions	
Temperature	-40°C to +85°C
Humidity	0 to 100% RH
Power supply	
Battery type	1 x 3.6V AA Lithium
Expected operation	<7 years (depending on sampling, signal, environment)
Configuration	
Sending interval	Configuration via NFC and downlink
Data upload interval	Configuration via NFC and downlink
NFC configuration	<a href="#">Native Android App</a>

# Datasheet

Release: 3.8.2023

Version: 1.0

senzemo

## Connectivity

Wireless Technology	LoRaWAN® 1.0.3
Wireless Security	LoRaWAN® End-to-End encryption (AES-CTR), Data Integrity Protection (AES-CMAC)
LoRaWAN Device Type	Class A - End-device
Supported regions	US902-928, EU863-870, AS920-923, AU915-928
Link Budget	137dB (SF7) to 151dB (SF12)
RF Transmit Power	14dBm (Region specific)

## Sensors

### Food temperature probe

Range	-40°C to +380°C (Possible with custom probes - contact sales)
Accuracy	±0.5°C

### Acceleration

Range	±2g to ±16g
-------	-------------

## Accessories

MPOM40	Snap-on mounting kit
--------	----------------------