

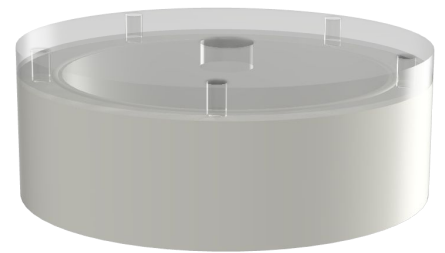
---

## LoRaWAN Sensor for Level Measurements

---

### Key features:

- Indoor and outdoor use
- Distance Measurements
- Motion detection
- High and Low parameters alarm values
- Sensor manipulation alert
- Battery level feedback
- Reconfiguration Over The Air
- Standardized sensor enclosure - IP67 rated
- Easy to install
- Up to 15 km of range



### Connectivity:

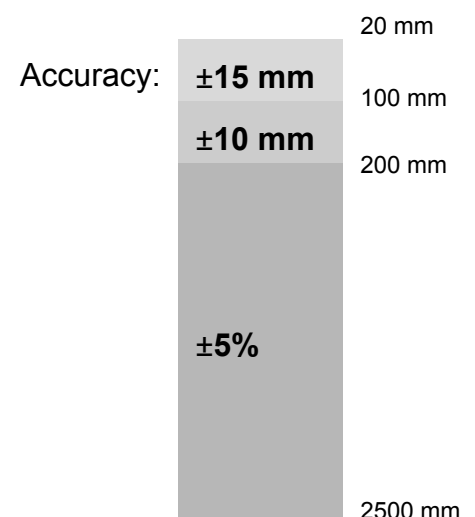
- LoRaWAN up to 15 km range (LOS)
- EU868, AS923, AU915, US915

### Power supply:

- 1 x 3.6V AA Lithium (up to 5 years of operation)

### Technical specification:

- Level: Range 20 mm - 2500 mm;
- Temperature: Range -40°C to +65°C; Accuracy  $\pm 0.5^\circ\text{C}$
- Accelerometer: Range  $\pm 2\text{ g}$  to  $\pm 16\text{ g}$ ; Accuracy  $\pm 40\text{ mg}$
- Dimensions: 75 mm x 28 mm



### Potential applications

- Water tanks
- Waste bins
- Silos
- Drainage pipes